

Intelligent Video Telematics Solution

All your needs are just Simple as is!

K220



K220 is an all-in-one 4G LTE connected digital camera solution. K220 can help fleet managers evolve from tracking only technology to the new video telematics era. Built in with powerful Qualcomm® processor and Andorid™ Platform, it not only provides powerful performance, but also flexibility with a suite of APIs & SDK for system and cloud integration. High speed 4G LTE allows remote live view to ensure operators have full awareness over the whole fleets. K220 also equips dual full HD cameras which provide both forward/ in-cabin non-stop recording while vehicle is on operation. The tamper-resistant and industrial-grade design make the K220 as trusted solution.



Always connected

- Built-in 4G LTE Cat.6 & dual-band WIFI
- Over-the-Air firmware & setting updates
- Bluetooth® 4.2 BLE



Reliable and flexible platform

- Qualcomm® Octa-core & Android™ 9.0
- Open APIs & SDK for seamless integration with fleet management solutions



Track your fleets in real-time

- Comprehensive satellite tracking
- 3-axis G-sensor and Gyro support



Get the full picture of your vehicles

- ECU integration to acquire vehicle and engine telematics data *
- All video footage are safely stored both on the SD card and Cloud
- Enhanced ADAS and DMS function



Affordable Solution

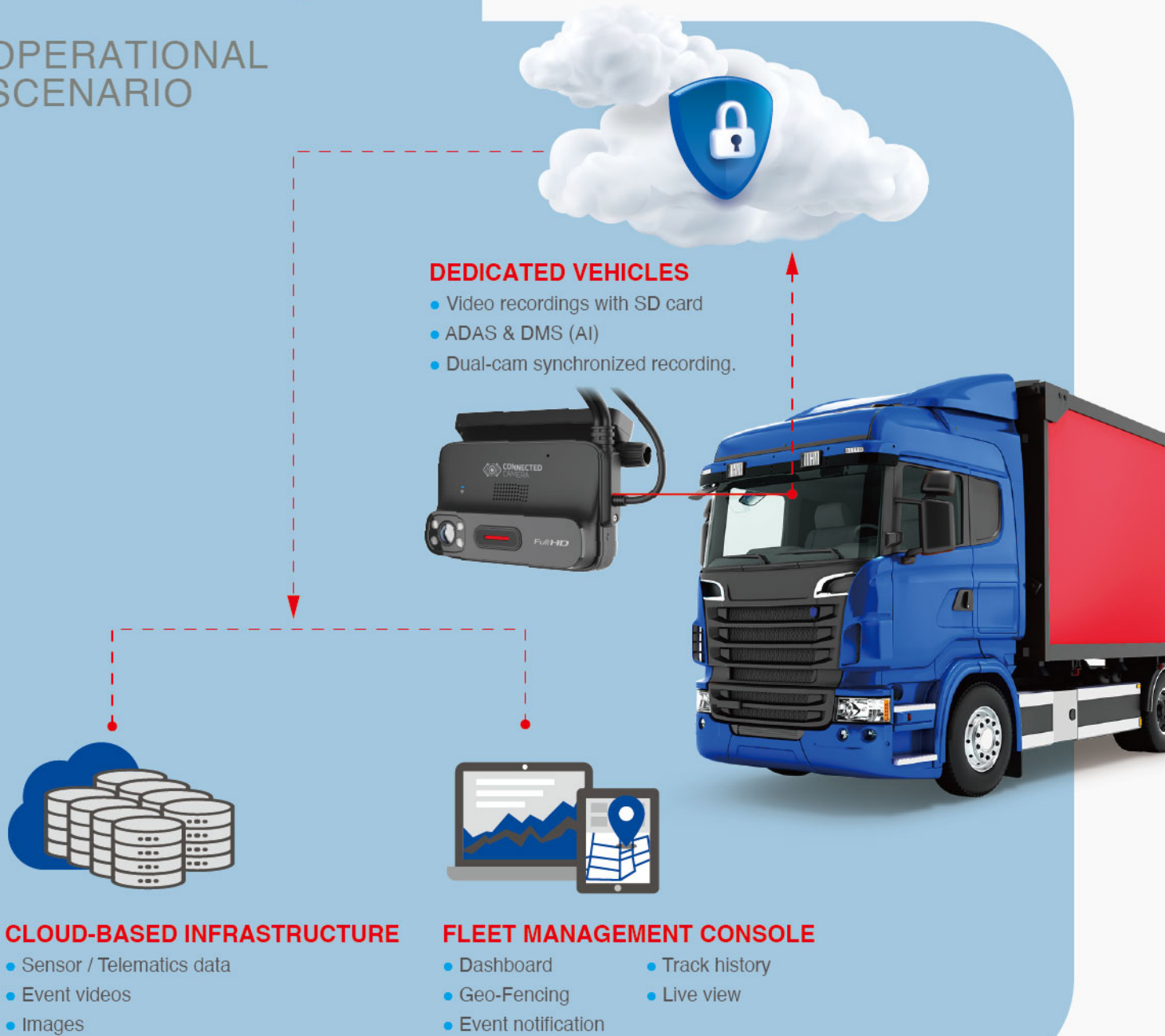
- Cost-Effective configuration
- Compact design. Simple as is

* Only when equipped with Smart Cable

DETAILED VIEW



OPERATIONAL SCENARIO



ACCESSORIES

<p>OBD POWER CABLE</p> 	<p>OPEN WIRE POWER CABLE</p> 	<p>OBD DONGLE</p> 	<p>EXTERNAL CAMERA</p>  <p>Optional camera connected via Mini USB.</p> <ul style="list-style-type: none"> • A50 rear camera • i15/ i25 DMS/ in-cabin camera • USB waterproof camera 	<p>PANIC BUTTON</p> 
<p>Standard accessory</p>	<p>Optional</p>	<p>Optional</p>	<p>Optional</p>	<p>Optional</p>

SPECIFICATION



Platform	Qualcomm® Snapdragon™ SDM450 Octa core, 1.8GHz
OS	Android™ 10
Memory	2GB RAM / 16GB internal storage
Expansion	MicroSD slot (Storage up to 1TB)
Wireless Interface	IEEE 802.11 a/b/g/n/ac (2.4GHz & 5GHz) Bluetooth® 4.2 BLE GPS, QZSS, GLONASS, Galileo EMEA & Australia <ul style="list-style-type: none"> • LTE FDD Band 1/2/3/4/5/7/8/20/28; • LTE TDD Band 38/39/40/41; • WCDMA Band 1/2/4/5/8; • GSM 850/900/1800/1900MHz North America <ul style="list-style-type: none"> • LTE FDD Band 2/4/5/7/12/13/14/17/25/26/66/71; • LTE TDD Band 41; • WCDMA Band 2/4/5"
Sensors	3-axis Accelerometer, 3-axis Gyro
Camera	Forward: FOV: 142.8°, H: 120.4°, V: 63.8° (±5%) Full HD 1920 x 1080 @ 30fps (configurable) Inward (IR): 142.8°, H: 120.4°, V: 63.8° (±5%) Full HD 1920 x 1080 @ 30fps (configurable)
Physical Interface	MicroSD slot (up to 1TB capacity) NanoSIM slot (SIM 1) and eSIM** (SIM 2) Mini USB x1 (supports external cam, USB type) Built-in mic x1 Built-in speaker x1
All-in-one Connector	12~32V power input, IGN power on signal input (H active, 7~32V) GPIO Input x 1 (Default)/ GPIO Input x 3 + Output x 1 (Option)
Buttons	Emergency recording button
LED Indicators	Recording, WiFi/LTE active
Battery	5F SuperCAP (approx. 12 secs backup power supply for video clips saving)
Power Consumption	Full run mode: 4.6W (12V/ 380 mA) Parking mode: 90mW (12V/ 7.5mA)
Boot Up Time	Cold boot: 30s; Resume from parking mode and start recording: 2s
Parking Mode	With impact detection
Environment	-20° to +60°C (-40° to +140°F) operating temperature -20° to +70°C (-40° to +158°F) operating temperature (under certain conditions) -30° to +85°C (-22° to +185°F) storage temperature
Certification*	CE, CB, FCC/IC, UKCA, BQB, WEEE, ROHS, PTCRB, AT&T Network Ready, T-Mobile, AWS, BIS
Warranty	12 months (extended warranty available)
Weight	205g
Dimensions	112 x 70 x 47.9mm

Box contents*

- Fleet connected camera
- Quick start guide
- Windshield mounting kit
- Standard with OBD power cable
- Cable cover

* Region Dependent ** Optional